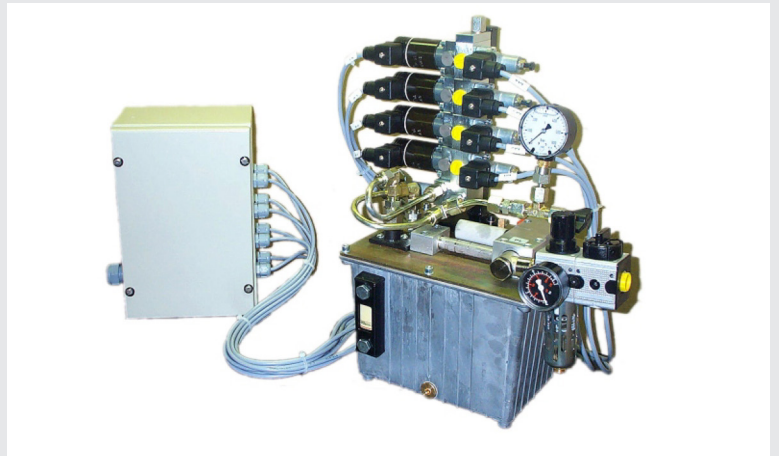


## Air driven hydraulic pump unit LP

### Specifications

- Working volume : 4 l
- Factory set pressure up to 400 bars
- Flow rate with no load : 2 l/mn
- Flow rate under load : 1 l/min at 400 bars
- Air supply : 6 bars



Pump, tank, air regulation unit composing a regulated hydraulic source for single or double-acting hydraulic clamps.

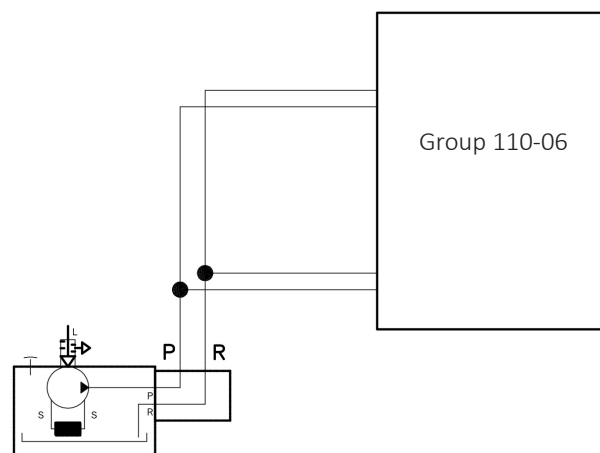
This source is compatible with the distribution (group 110-06).

Reliable solution that is well adapted to clamping systems (except ROTO-ESCAM clamp).

The unit works in standby mode, automatically compensating any pressure losses.

The filter, regulator and built-in lubrifier guarantee the unit's good reliability.

This unit is not suitable for continuous operation, for example for the supply of alternating client cylinders.



SERAPID France  
+33 (0)2 32 06 35 60  
info-fr@serapid.com

SERAPID Deutschland GmbH  
+49 (0)7931 96 47-0  
info-de@serapid.com

SERAPID Ltd  
+44 (0)1359 233335  
info-uk@serapid.com

SERAPID INC.  
+1 586 274 0774  
info-us@serapid.com