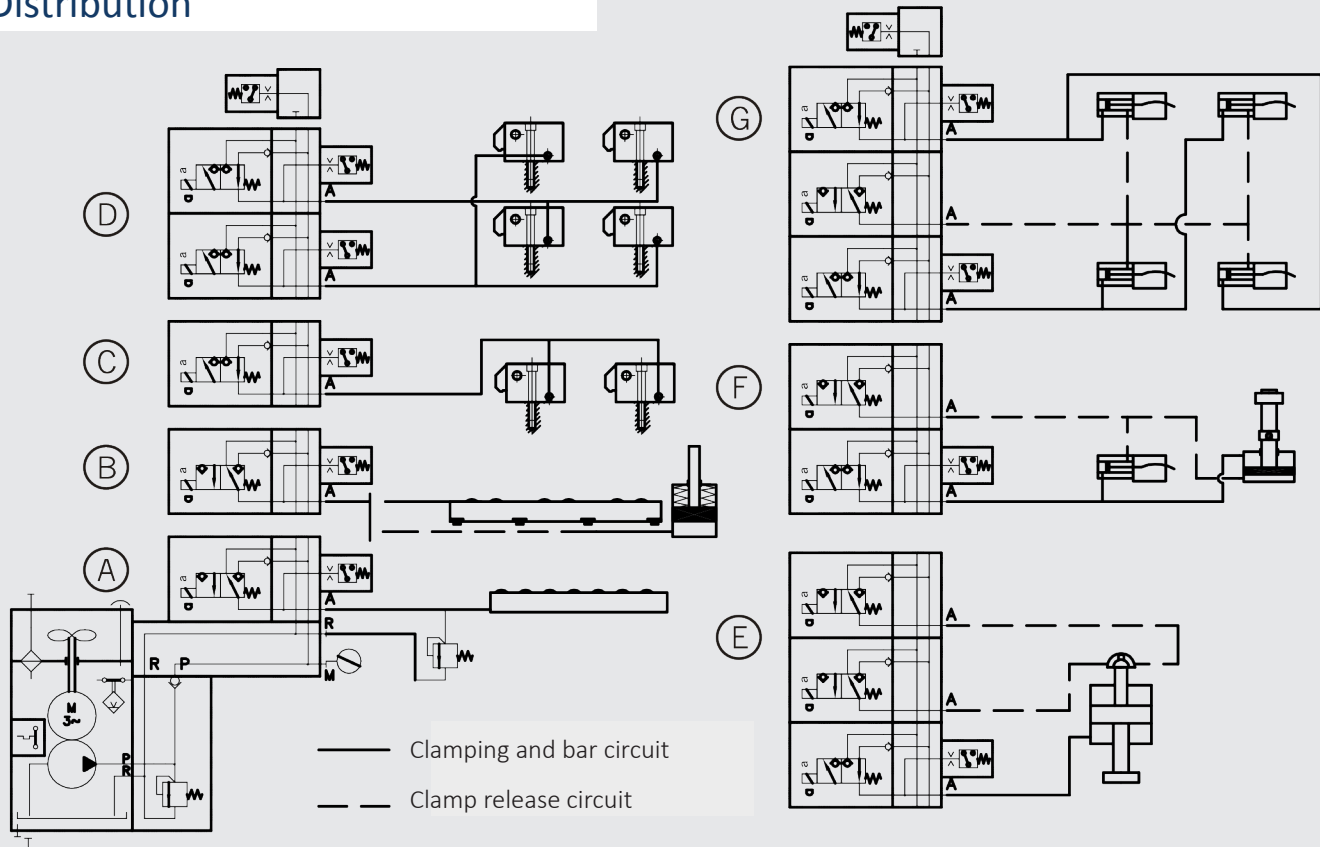


Distribution



Part	Number of circuits	Use	Products concerned	Group
A	1	100 roller-ball bar circuit	LBH LGHL LGH	10-02 ; 10-04 ; 10-05
B	1	Heavy roller bar circuit	LGGH LPGH	20-01 ; 20-05
		Mechanical clamp release circuit	BCM BTM	40-01 ; 60-01
C	1	Single-acting bolster clamping circuit	PSH BTSA BTSB BTSC LSH PHL BLH	40-02 ; 40-03 ; 40-07 ; 50-03 ; 50-04 ; 60-02 ; 70-01
D	2	Single-acting diagonal ram clamping circuit	PSH BTSA BTSB BTSC LSH PHL BLH	40-02 ; 40-03 ; 40-07 ; 50-03 ; 50-04 ; 60-02 ; 70-01
E	1+2	ROTO-ESCAM clamping circuit	ROTO-ESCAM	90-02
F	1+1	Double-acting bolster clamping circuit	TBH TBHI TBHS LSGH LSHP	70-02 ; 70-03 ; 80-01 ; 80-02 ; 80-03
		TB90 bolster and ram clamping circuit	TB90	90-01
G	2+1	Double-acting diagonal ram clamping circuit	TBH TBHI TBHS	80-01 ; 80-02 ; 80-03

Specifications

Sealed damper modular distribution, in a compact column with built in pressure limiter and pressure switch. This distribution is designed for power packs 110-03 to 110-05, but can be delivered in a line version for the distribution of a client source.

Each clamping circuit has its controlling pressure switch, and all distributors are powered off in the clamping position. This guarantees that even in the event of a power failure, there are no risks of unintentional clamp release.

The A to G circuits presented here are the standard modules for SERAPID products and can be combined to needs. Other combinations can be produced if necessary, please contact us.

A pressure reducer can also be inserted anywhere on the column.

SERAPID Deutschland GmbH
+49 (0)7931 96 47-0
info-de@serapid.com

SERAPID France
+33 (0)2 32 06 35 60
info-fr@serapid.com

SERAPID Ltd
+44 (0)1359 233335
info-uk@serapid.com

SERAPID INC.
+1 586 274 0774
info-us@serapid.com