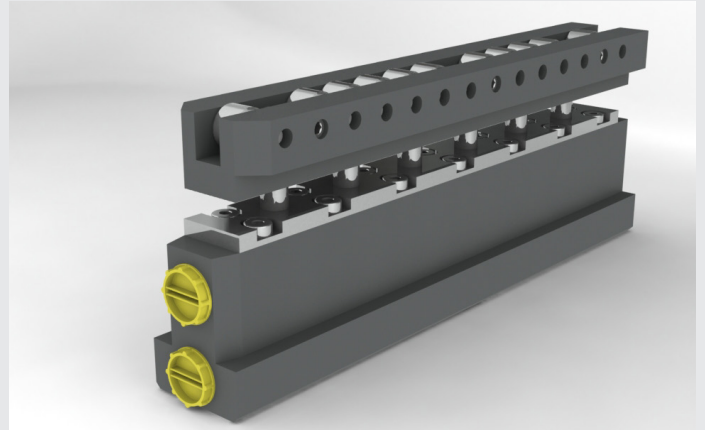


Roller bar clamp LSGH

Double T slot with rolling track
25-140 kN | 4 models

Specifications

- Fixed in the bolster T slot, the bar clamps the die using its T slots
- Rolling track on the upper part
- Hydraulic clamping and lifting
- Several bars can be combined to cover the entire bolster length
- Fully embedded
- Clamping of dies covering the entire bolster
- Standard working temperature of up to 70 °C, 160 °C with Viton seals



static removable bolster ram hydraulic single-acting hydraulic double-acting mechanical automatic

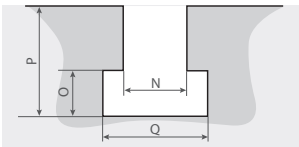
Specifications and dimensions

	LSGH 22	LSGH 28	LSGH 36	
DIN 650 slot	T 22	T 28	T 36	
length (L - mm)	180	270	620	340
clamping force (kN)	24	56	140	110
static load capacity (kN)	9,1	28,6	71,5	52,5
weight (kg)	2,2	5,2	12,2	11,2
oil volume (cm ³)	5	20	50	36
max flow rate (l/min)	2,1	3,3	8,2	6
max. working pressure (bar)	400	400	400	400
number of rollers	8	11	29	12
roller size	Ø12 x 10	Ø16 x 12	Ø20 x 11	
stroke C (mm)	4	7	8	
number of pistons	4	6	15	8

All dimensions are in millimeters.

Hydraulic connection : G1/8", UNF 7/16" available as an option
To calculate the dynamic load for each roller, please refer to technical sheet 010-00. For more details on clamp fixing, refer to our drawings ref 070-00-01 (on request) to avoid any strain on the hydraulic piping.

DIN 650 T slot

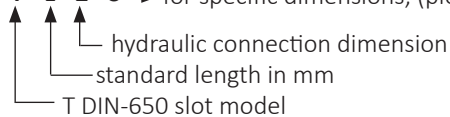


N	18	22	24	28	36
O	12	16	18	20	25
P	30	38	42	48	60
Q	30	37	42	46	56

Available for DIN 650 T22, T28 and T36 slots. Specific dimensions on request. Check actual dimensions before ordering.

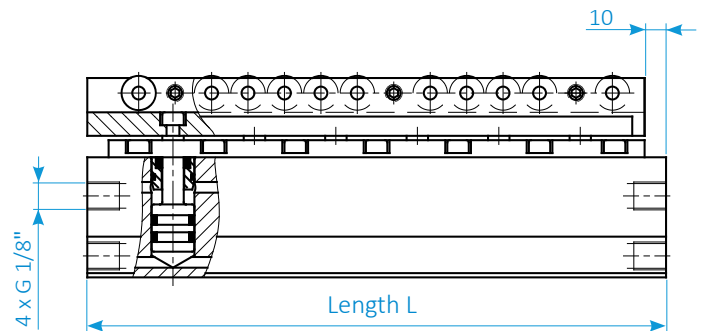
Purchase order reference

LSGH - T - L - Z - S → for specific dimensions, (please attach a drawing)



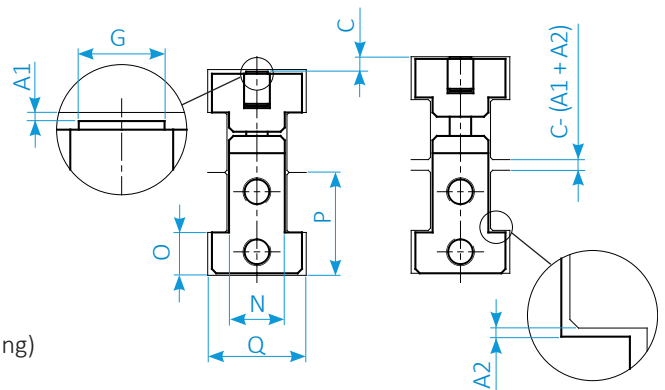
Example : LSGH 28- 620 G1/8"

LSGH roller bar clamps are composed of two bars located one on top of the other, inserted into the DIN 650 T slots. The lower part is fitted in the bolster T slot and the upper part in the die T slot. The upper part is also composed of rollers. In the open top position, this bar is used as a track on which the die can roll. LSGH roller bar clamps can be used to clamp dies that cover the entire bolster surface.



Clamped

Unclamped



DIN 650 T slot A1 = A2 = 1

SERAPID France
+33 (0)2 32 06 35 60
info-fr@serapid.com

SERAPID Deutschland GmbH
+49 (0)7931 96 47-0
info-de@serapid.com

SERAPID Ltd
+44 (0)1359 233335
info-uk@serapid.com

SERAPID INC.
+1 586 274 0774
info-us@serapid.com