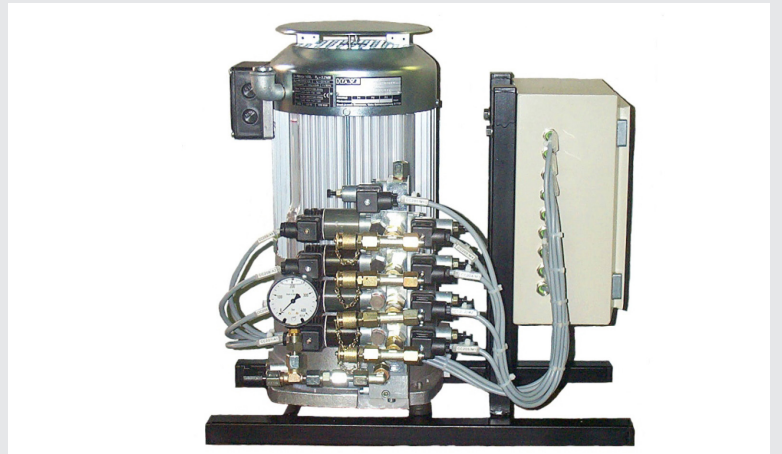


## Hydraulic power unit

with electrical control cabinet

### Specifications

- Radial piston units
- Working volume : from 2.4 to 5.5 l
- Motor power : 2.2 kW at 230 or 400 V
- Three phased 50 Hz IP 54
- Factory set working pressure up to 400 bars
- 1, 2 or 3 flow rates from 2 to 13 l/min



This compact unit is highly polyvalent (wide range of flow rate/pressure ratio combinations available), it allows continuous operation and is adapted to all SERAPID products, including in the most severe usage conditions.

It allows from 1 to 3 outputs at different flow rates and pressures, as well as the use as a staged unit.

The smallest model is also available in a horizontal version.

The level and oil temperature safety devices are wired.

A reliable solution that is well adapted to all clamping systems and complementary functions.

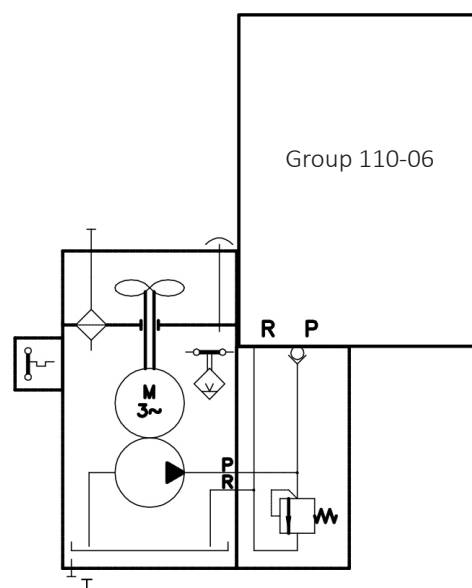
The motor and distribution controls (see group 110-06) is brought to a complete, stand alone electrical cabinet with key operated box, in a ready to use unit.

The oil level and temperature safety devices are included, as well as a relay to add to the press safety chain to stop the press in the event of an incident.

The indicators on the front face are used to check circuit status. There is an interlocking system for the circuits that must not run together. For specific needs, especially when there is a high number of detectors, the cubicle can be built with a PLC rather than wired logic.

### Options

- Pendant control.
- Protective ventilator cover.



SERAPID Deutschland GmbH  
+49 (0)7931 96 47-0  
info-de@serapid.com

SERAPID France  
+33 (0)2 32 06 35 60  
info-fr@serapid.com

SERAPID Ltd  
+44 (0)1359 233335  
info-uk@serapid.com

SERAPID INC.  
+1 586 274 0774  
info-us@serapid.com